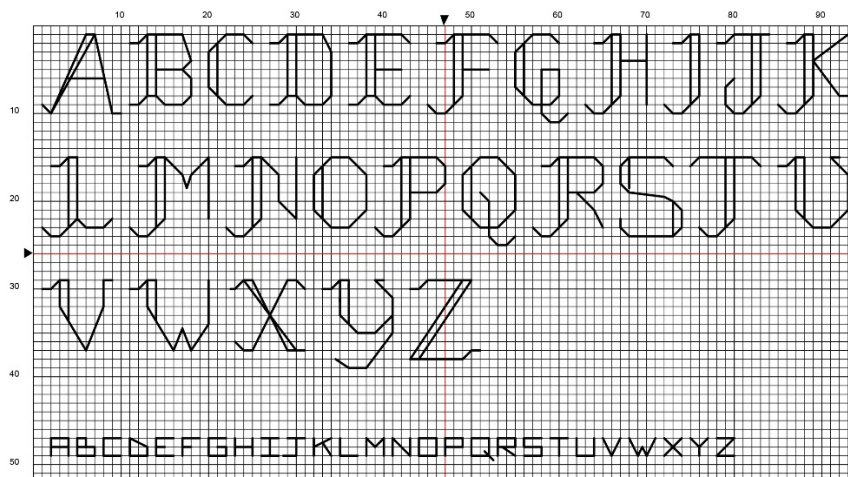


The Laurel Witch Patreon Cross Stitch Pattern

April Showers



I hope you like this little Springtime Witch! I was originally going to put “April Showers bring May Flowers” as the text, but decided since it’s not Spring for everyone in April/May I thought I’d put something more general. Feel free to change the text to whatever you’d like of course! Here are the alphabets I’ve used:



Cross Stitch Pattern – Details

10 stitch/in 103x75 Stitches (26.2 x 19.0 cm) (10.3 x 7.5 in.) 14 stitch/in 103x75 Stitches (18.7 x 13.6 cm) (7.4 x 5.4 in.) 16 stitch/in 103x75 Stitches (16.4 x 11.9 cm) (6.4 x 4.7 in.) 18 stitch/in 103x75 Stitches (14.5 x 10.6 cm) (5.7 x 4.2 in.)				
	Number	Name:	Strand	Length
A	DMC BLANC	White	2	0.1 Skeins
B	DMC 310	Black	2	0.4 Skeins
C	DMC 225	Shell Pink ultra very light	2	0.1 Skeins
E	DMC 3705	Melon dk	2	0.1 Skeins
F	DMC 309	Rose deep	2	0.1 Skeins
H	DMC 304	Christmas Red medium	2	0.1 Skeins
J	DMC 730	Olive Green very dark	2	0.1 Skeins
N	DMCe C415	DMCe C415	2	0.1 Skeins
Q	DMC 3371	Black Brown	2	0.1 Skeins
V	DMC 702	Kelly Green	2	0.1 Skeins

Floss: I use 2 strands of DMC but for the backstitches and two French knots (the witch and the bird eyes), I suggest using one strand of floss.

Skin Tones: For an additional skin tone colour I can suggest replacing DMC 225 (C) with DMC 840 and DMC 152 (D) with DMC 839 as one option.

Fabric: Make sure to add enough fabric around the design. I'd suggest adding 5 cm – 7.5 cm (2-3 in) around each edge for framing. I suggest this design could be stitched on any colour.

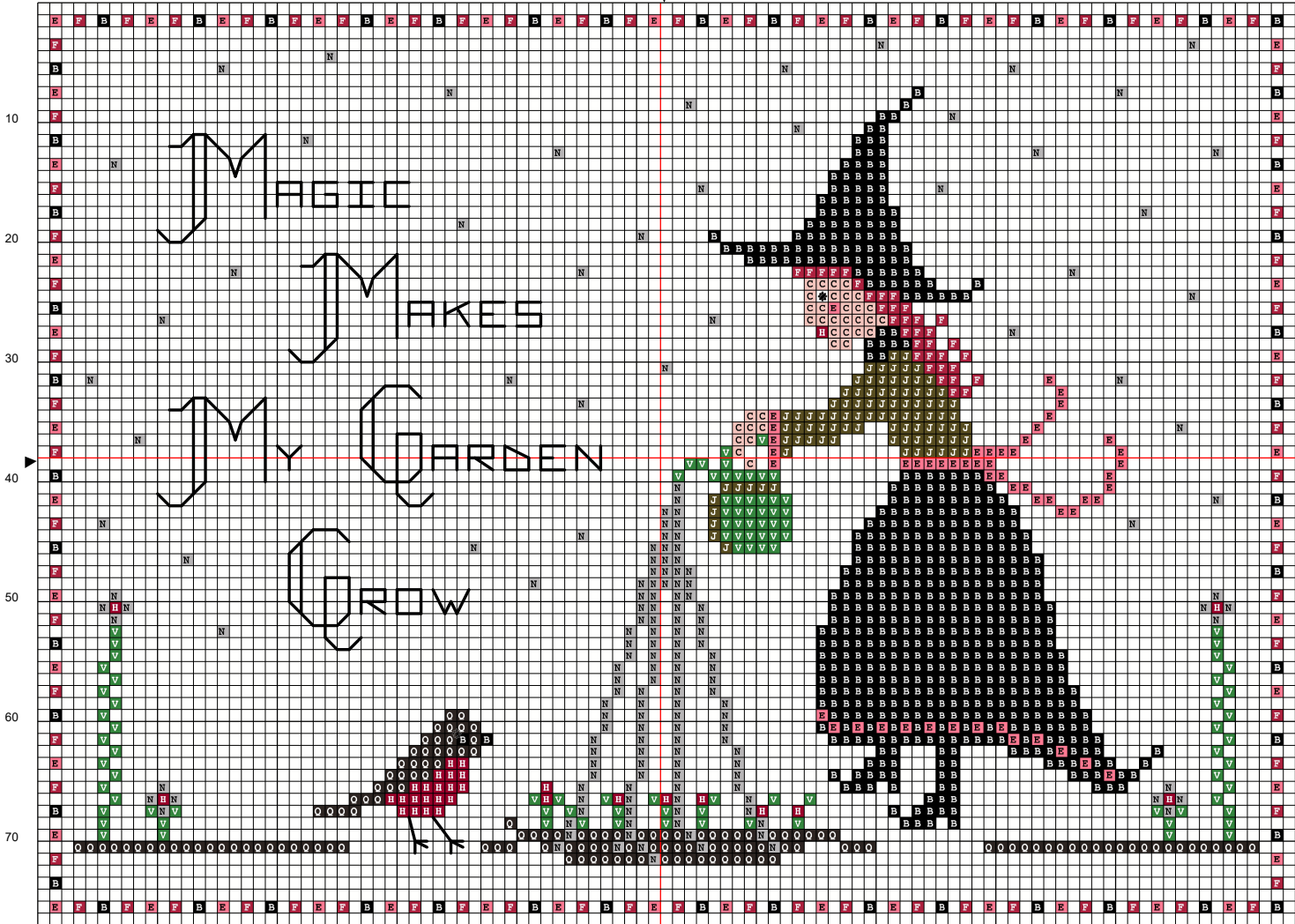
Stitch Size: Do check the stitch counts and sizes above the colour key. I included a size 10 option if you'd like to make a larger needlepoint on size 10 mesh canvas for tapestries. In this size using tapestry wool, you wouldn't have to stitch a whole cross stitch and could use the tent stitch instead - // (half cross stitches). Please note though: I did not include the colour conversions and amounts for tapestry wool.

I normally stitch my patterns 2 over 2 on 32-count Zweigart or Laguna evenweave or linen fabrics.

Online Resources: If you are new to cross stitching and would like some help to get started with stitching from a counted cross stitch pattern, I have listed some resource links on my blog at thelaurelwitch.com and will keep updating it whenever possible.

Yours truly in all things mystical and magical,

Laura Daub ~ The Laurel Witch



10 stitch/in 103x75 Stitches (26.2 x 19.0 cm) (10.3 x 7.5 in.)
 14 stitch/in 103x75 Stitches (18.7 x 13.6 cm) (7.4 x 5.4 in.)
 16 stitch/in 103x75 Stitches (16.4 x 11.9 cm) (6.4 x 4.7 in.)
 18 stitch/in 103x75 Stitches (14.5 x 10.6 cm) (5.7 x 4.2 in.)

	Number	Name:	Strand	Length
A	DMC BLANC	White	2	0.1 Skeins
B	DMC 310	Black	2	0.4 Skeins
C	DMC 225	Shell Pink ultra very light	2	0.1 Skeins
E	DMC 3705	Melon dk	2	0.1 Skeins
F	DMC 309	Rose deep	2	0.1 Skeins
H	DMC 304	Christmas Red medium	2	0.1 Skeins
J	DMC 730	Olive Green very dark	2	0.1 Skeins
N	DMCe C415	DMCe C415	2	0.1 Skeins
Q	DMC 3371	Black Brown	2	0.1 Skeins
V	DMC 702	Kelly Green	2	0.1 Skeins